



## GPR-1600MS SUB-PPM O2 ANALYZER

Sub PPM O2 Analyzer 0-1 PPM low range, 5 PPB sensitivity, measures O2 concentrations from 10 PPB to 1000 PPM utilizing the proprietary Pico-Ion oxygen sensor technology, recovers to low PPM levels in minutes. Features

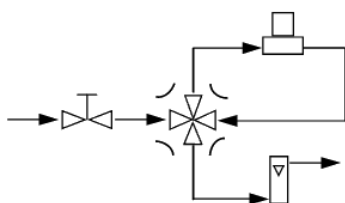
- an advanced Pico-Ion oxygen sensor technology
- over 36 month operating life with no periodic maintenance
- menu driven controls
- integral 4-way Sample/Bypass valve
- **integral PID controlled heated system for enhanced accuracy**
- two user field selectable oxygen alarms
- USB or RS232 data communication
- integral data logger



### TECHNICAL SPECIFICATIONS

<b>Accuracy:</b>	< 2% of FS	<b>Analysis Ranges:</b>	0-1, 0-10, 0-100 and 0-1000 PPM
<b>Application:</b>	Oxygen analysis in inert, helium, hydrogen, mixed gas streams	<b>Area Classification:</b>	General purpose
<b>Alarms:</b>	2 adjustable form C relay contacts non-latching; "weak sensor" indicator; power failure and system failure	<b>Calibration:</b>	Certified span gas of O <sub>2</sub> balance N <sub>2</sub>
<b>Compensation:</b>	Barometric pressure and temperature	<b>Connections:</b>	1/4" compression tube fittings
<b>Controls:</b>	Menu driven range selection, calibration, alarm and system functions	<b>Data Acquisition:</b>	Selectable data point intervals
<b>Display:</b>	Graphical LCD 5 x 2.75; resolution .001 ppm	<b>Enclosure:</b>	Painted aluminum 7.5" x 10.8" x 12.25" panel mount
<b>Flow Sensitivity:</b>	Recommended flow 1-2 SCFH	<b>Linearity:</b>	> .995 over all ranges
<b>Pressure:</b>	Inlet – 5-30 psig, vent – atmosphere	<b>Power:</b>	110/ 220 VAC, specify for heater system
<b>Range ID:</b>	DC Voltage representing each range	<b>Recovery Time:</b>	Recovery on N <sub>2</sub> after exposure to Air for 30 seconds > 1 ppm 45 minutes
<b>Response Time:</b>	90% of final FS reading < 30 seconds	<b>Sample System:</b>	Wetted parts: stainless steel, flow control, sample/bypass valves; flow indicator
<b>Sensitivity:</b>	< 0.5% of FS range	<b>Sensor Model:</b>	GPR-12-2000MS
<b>Sensor Life:</b>	36 months at 25°C and 1 atm	<b>Signal Output:</b>	4-20mA isolated and 0-1VDC
<b>Temp. Range:</b>	5° to 45°C	<b>Warranty:</b>	12 months analyzer; 12 months sensor

\*At constant temperature and pressure



4- Way Sample/Bypass Valve